

LELYSTAD AIRPORT

Pilot's Information Work in progress 2017

Phase 6

Version 1.1 – 23 november 2017

WORK IN PROGRESS 2017

Extension and renovation of runway 05/23

Between January 9th 2017 and January 17th 2018, extensive work in progress takes place at Lelystad Airport due to the extension and renovation of runway 05/23.

This will be done in a total of 6 phases.

The operational consequences for phase 6 are currently published in AIP Supplement 09/2017 (publication date 23 NOV 2017).

This bulletin shows in detail the consequences for phase 6.

Always check the NOTAM's for the latest information.

WORK IN PROGRESS

Phase 6 of 6

When?

- Saturday November 18th 2017 – Wednesday January 17th 2018

General consequences

- During daylight, only VFR procedures are allowed. Tower provides *aerodrome information only*, so no AFIS or ATC. Two-way radio contact is mandatory.
- IFR and VFR night operations, as published in AIP EHLE AD 2.22, are only available on Thursdays and Fridays.
 - VFR night operations only after UDP until 2000 LT.
 - IFR operations only after 2020 LT, until 2100 LT (or, with extension, 2200 LT)
- Approach and runway lighting is limited, see further details in this bulletin.

WORK IN PROGRESS

Phase 6 of 6

Operational hours

- Monday / Tuesday / Wednesday: 0800 – 2100 LT, but only within UDP.
- Thursday and Friday: 0800 – 2100 LT, but not earlier than beginning of UDP.
An extension of one hour between 2100 and 2200 LT is possible on request (24 hours prior notice).
- Saturday and Sunday: 0900 – 1900 LT, but only within UDP.

Please note that the airport is closed on December 25th and 26th 2017 (Christmas) and on January 1st 2018 (New Year's Day).

GENERAL LAYOUT DURING PHASE 6



OPERATIONAL CONSEQUENCES

RUNWAY PHYSICAL CHARACTERISTICS

RWY Designator	RWY dimensions (m)	THR co-ordinates	THR elevation	CWY dimensions (m)	Strip dimensions (m)
05	1350 x 45	52°27'04.3"N 005°30'39.4"E*	-12 ft	60 x 150	1470 x 300
23	1350 x 45	52°27'33.8"N 005°31'32.2"E*	-12 ft	60 x 150	1470 x 300

DECLARED DISTANCES

RWY Designator	TORA (m)	TODA (m)	ASDA (m)	LDA (m)	Remarks
05	1350	1410	1350	1350	-
23	1350	1410	1350	1350	Backtrack for full TORA RWY 23 should be co-ordinated with Lelystad Radio.
	1250	1310	1250	NA	Take-off from intersection with TWY S1.

OPERATIONAL CONSEQUENCES

ADDITIONAL INFORMATION for phase 6

- HAP at it's original location, as published in AIP.
- For NDB procedure RWY 23: the new runway length leads to a new threshold crossing clearance of 58 ft.
- Lighting:
 - Approach lighting not available.
 - PAPI on both runways available on left side of de runway.
 - Runway edge lighting available, spacing changed to 90m.
 - Taxiway lighting not available.
- Simulated engine failure exercises not allowed in direction of work in progress locations.
- All existing taxiway designators for entries/exits south of the runway are permanently renamed:

Former taxiway designator	New taxiway designator
A	S1
B	S2
C	S3
D	S4
E	S5

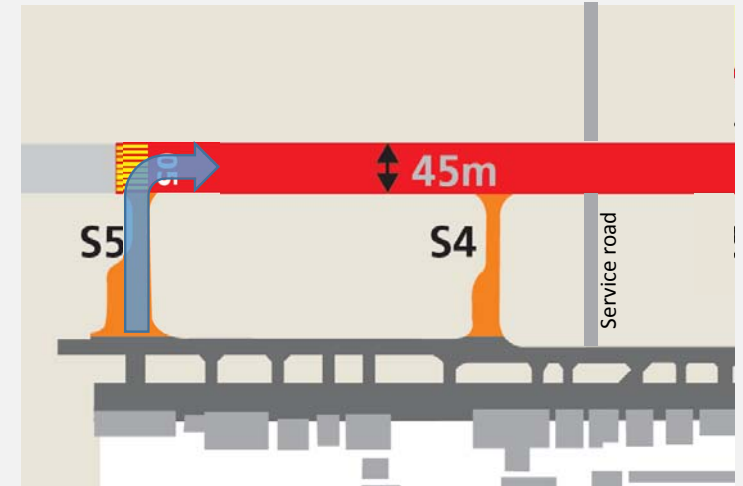
GROUND MOVEMENT RWY 05

FOR DEPARTURE

Run-up area: S5
Line-up via S5

AFTER LANDING

Vacate via S4, S3, S2 or S1.



GROUND MOVEMENT RWY 23

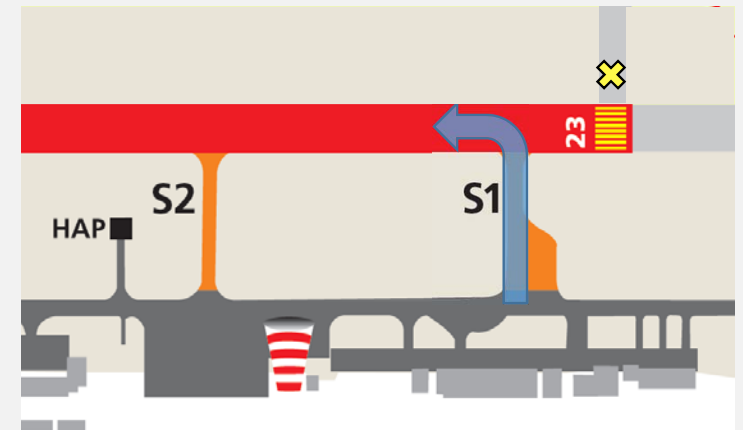
FOR DEPARTURE

Run-up area: S1
Line-up via S1

Please note: Departure from S1 will give you a TORA of 1250m. If the full TORA of 1350m is required, please coordinate your backtrack to the threshold of RWY 23 with tower.

AFTER LANDING

Vacate via S2, S3, S4 or S5.



ADDITIONAL INFORMATION

GENERAL INFORMATION

- Fire fighting category
 - Standard is CAT 3.
 - CAT 4 or CAT 5 should be requested with at least 72 hours prior notice.
- Fuel:
 - JET A1 (fixed station and fuel truck)
 - AVGAS 100LL and AVGAS UL91 (fixed stations only)
- GPU *not* available.
- Payment; cash or VISA / Mastercard.

STRAIGHT IN PROCEDURE

During daylight, a straight-in approach is possible for aircraft unable to follow the standard circuit for performance reasons. A straight-in is only allowed after coordination with the Lelystad Radio. Report therefore a straight-in well in advance to Lelystad Radio. When established on final report also "final straight in, two minutes out". Permission for the straight-in approach does not imply right of way over traffic in the standard circuit.

FOR FURTHER INFORMATION

contact Airport Authority:

tel. +31 320 284 791

e-mail: operations@lelystad-airport.nl